

## **Historic, Archive Document**

Do not assume content reflects current scientific knowledge, policies, or practices.



62,01

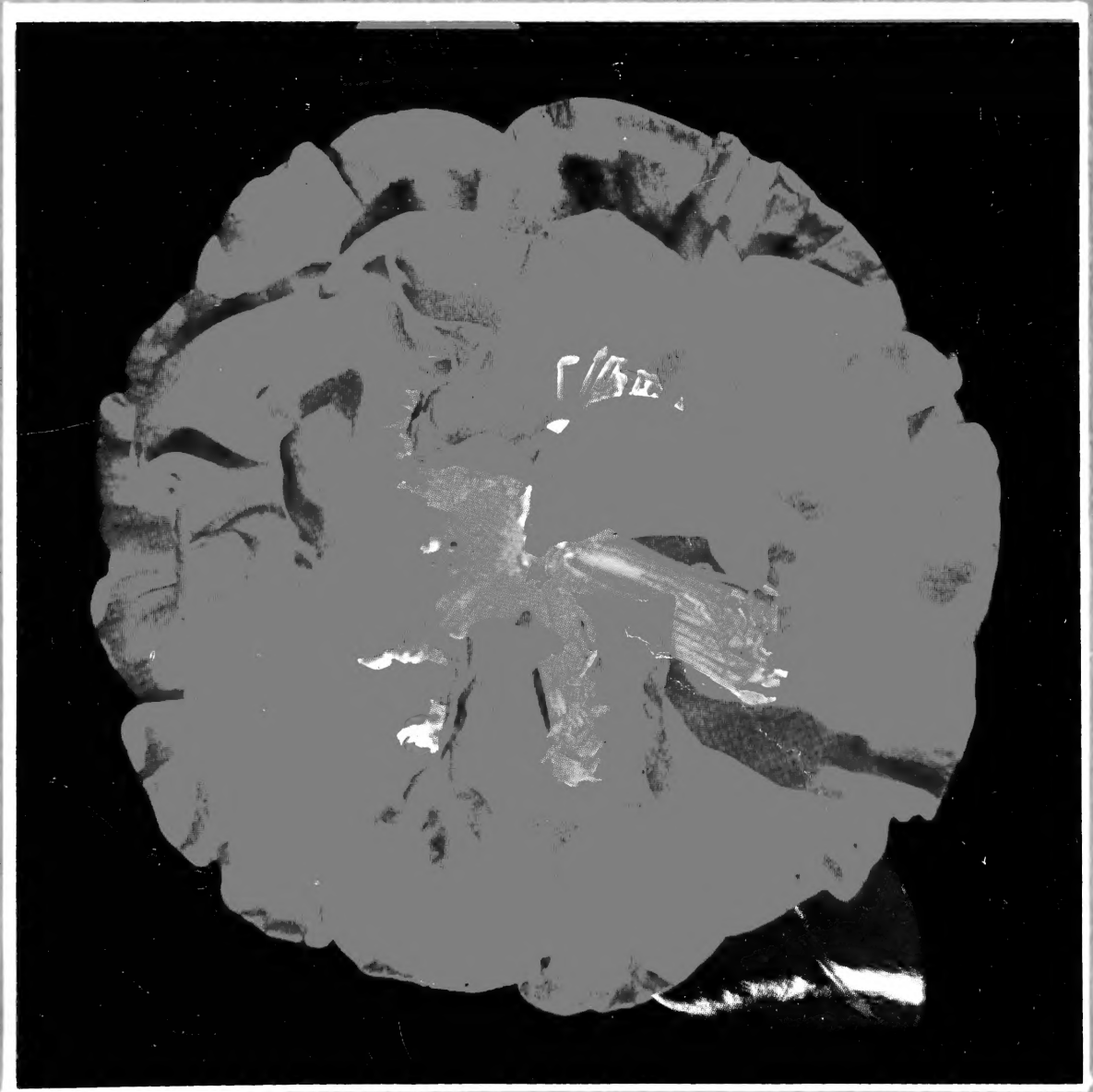
LIBRARY  
NOV 28 1952  
U. S. Department of Agriculture



# **F**lowerwood **NURSERY**

**AZALEAS AND CAMELLIAS OUR SPECIALTY**

PHONE 2-6372  
RT. 1, BOX 130 CEDAR POINT ROAD  
MOBILE, ALABAMA  
PHONE 361  
LOXLEY, ALABAMA



MATHOTIANA SUPREME

**1952**  
**1953** WHOLESALE CATALOGUE

### ***Cover Illustration - Mathotiana Supreme***

We rate this newly introduced flower as the best Camellia grown today. It is a magnificent sport from Mathotiana Rubra (Purple Dawn), and has all the good growing qualities of the Mathotiana.

**Grafts ..... \$12.50**



### **PRIDE OF MOBILE**

The Pride of Mobile azalea is, in our opinion, the most beautiful and satisfactory of all Indica Azaleas. Its color is brilliant watermelon red, and blooms more profusely than most other varieties. The true Pride of Mobile, which we have, is a very hardy plant, and stands more cold than any other variety of Indica azalea. It generally blooms a little later than the other varieties, and the blooms, therefore, are not so often damaged by late cold weather.

This year we have 150,000 heavy, compact, field-grown plants of this variety in sizes from 10-12" to 24-30".

# **FLOWERWOOD NURSERY, INC.**

GREGORY L. SMITH, PRESIDENT

**NURSERIES LOCATED:**

**MOBILE, ALABAMA**

**Telephone 2-6372**

**Telephone Nights**

**Gregory L. Smith — 2-4773**

**Sidney B. Meadows — 3-4491**

Sidney B. Meadows — Manager

This is the home nursery which has specialized since the beginning of its business in the growing of fine Camellias and Azaleas. Here we are concentrating most of our efforts on the growing of lath azaleas and propagation of camellias, azaleas and ornamentals.

Two years ago growing fields located near Theodore, Alabama were added to the home nursery operations. We were fortunate in acquiring 200 acres of well-drained virgin soil which is the finest azalea and camellia soil we have ever seen. We will be glad to show you these beautiful two-year Camellias, Sasanquas, Magnolias, Kurume and Indica Azaleas at any time. Needless to say these are most reasonably priced.

We have devoted one of our large greenhouses to the production of high quality house plants. With the addition of this new department you will be able to pick up these plants along with your load of nursery stock. If necessary shipments will gladly be made by Express or Parcel Post.

## **LOXLEY, ALABAMA, BRANCH**

**Telephone 361**

Robert Duck — Manager

Our Loxley Nursery which was started only 7 years ago has developed into one of the finest azalea and camellia nurseries in the South. In our fields we have over 100 acres of beautiful specimen camellias along with many acres of azaleas and some other ornamentals.

In addition to the field plants we have extensive laths with thousands of camellias and azaleas.

We have expanded and developed this new nursery so as to enable us to better serve our many customers. We feel that with this extensive supply of plants we are now in a position to supply you with the very best in azaleas and camellias.

You are cordially invited to visit our nurseries at any time.

## TERMS AND CONDITIONS OF SALE

**DISCOUNTS:** A 20% discount will be given on all Balled & Burlapped plants which do not have to be crated and are loaded directly onto the customer's truck from growing beds or fields. There will be no discount allowed on lining out stock.

**TERMS:** Cash with order. No discount allowed except the one mentioned above.

**C.O.D. orders** will be considered only when a deposit of 25% is sent with order.

All plants selected or marked by customers in advance of the growing season will be regraded and priced according to size when delivered.

**SHIPPING:** Please state whether you want shipment by Express, Motor Freight, or Railway Freight. Parcel Post shipments will be made only if the amount of postage is included in order.

**SIZE OF ORDER:** Due to the present cost of packing we will not be able to accept any orders for shipment for less than \$10.00.

**CLAIMS:** We guarantee our plants to be true to variety and in good condition at time of delivery. Our responsibility ceases upon delivery to the carrier. All claims must be made immediately upon receipt of stock. We will adjust any mistake made by us, but in no case will our liability exceed the purchase price.

## A Z A L E A S

Azaleas are not difficult to grow, and require very little attention, if proper care is taken to see that they are planted in congenial surroundings.

Some of the major requirements in azalea culture are as follows:

1. Plant in well drained acid soil using liberal quantity of peat.
2. Mulch with oak leaves or pine straw.
3. Water during periods of drouth.
4. Fertilize lightly. Cotton Seed meal is excellent fertilizer for azaleas.
5. Keep free of insect pests. See spray schedule on page 34.

## Azalea Indica

Indica azaleas are not hardy in cold climates, but they are adaptable for plantings throughout the entire Gulf Coast Section, and along the Atlantic Coast area as far north as Norfolk, Va.

DAPHNE SALMON (Lawsal) — Light salmon. Fast, compact, upright grower, very hardy and blooms profusely. One of the finest of the Indica azaleas.

DUC DE ROHAN — Salmon pink. Profuse bloomer and compact grower.

ELEGANS — Light pink. A fast upright grower, and one of the first to bloom.

FIELDERS WHITE — A large pure white. Medium low compact grower.

FISHER PINK — Light pink. Blooms mid-season about the same time as Pride of Mobile. Large flowers, profuse bloomer, compact grower. We think this is one of the best.



8-10"

10-12"

12-18"

FORMOSA, Field Grown—We have a nice stock of these heavy compact field grown Indica Azaleas to offer at reasonable prices this season.

FORMOSA — Light purple with pink cast. Large flowers, large dark green leaves, fast dense grower. Very hardy. The best of its color.

GEORGE L. TABER — Flesh pink with deeper markings. Low compact grower.

GLORY OF SUNNYHILL — Salmon or brick dusk pink. Compact irregular grower. Large light green leaves. Very satisfactory bloomer.

INDICA ALBA — Pure white. Light green, hairy leaves, upright grower, mid-season bloomer. Very hardy.

INDICA ROSEA — Large blooms with red throat fading to light pink on outer edges. Very showy. Upright, vigorous grower.

LATANA ALBA — White. Dwarf, bushy grower, late bloomer.

LILACINA — Light orchid. Strong grower with large leaves. Very fragrant.

MOSS POINT RED — Orange red. Compact grower, dark green leaves, large, waxy flower, late bloomer.

ORCHID — Light orchid. Medium sized flower, early bloomer, fast, upright grower.

PHOENICIA — Large purplish pink flowers. Vigorous grower.

PRESIDENT CLAY — Orange red. Vigorous grower. Blooms mid-season. Very hardy.

PRIDE OF DORKING — Deep red. Late bloomer. Compact grower.

PRIDE OF MOBILE — This is the finest and most beautiful of all azaleas. Lovely watermelon pink blooms regularly and profusely cover the bushes. The larger plants cover with blooms to such an extent that the foliage is hardly visible, and even very small bushes make a wonderful display of flowers. It is a very hardy variety. We have the true Pride of Mobile, which is much better than many watermelon pinks sold for it, which are not as hardy.

SOUTHERN CHARM — A sport of Formosa with the same foliage and growing habits. Large pink blooms.

SUBLANCEOLATA — Large deep orange blossoms. Late bloomer. Tall open grower.



## Kurume Azaleas

Almost all florists and growers of pot plants are now familiar with the use of Kurume azaleas for pot plants, as each year the demand for them has grown tremendously. The trade has found these azaleas, which cover with a profusion of beautiful flowers when they come into bloom, to be very popular pot plants, and also a profitable crop that requires very little care or expense. They should be potted in a light soil, preferably with some peat mixed in, and kept well watered. In a 50 to 60 degree house the plants should come into bloom within six weeks to two months.

In addition to the use of Kurume azaleas for pot plants, they are extensively used for landscape work. They are a dwarf type of azalea, much hardier than the Indica varieties, and are very popular in cooler climates.

**APPLE BLOSSOM** — Pink hose-in-hose flowers.

**BRIDESMAID** — Big salmon pink flowers. More vigorous grower than other Kurumes.

**CHINA SEA** — A compact rose-pink hose-in-hose with large flowers. Mid-season bloomer.

**CHRISTMAS CHEER** — Free bloomer of the brightest red, hose-in-hose type flowers. Small dark green leaves. Mid-season.

**CORAL BELLS** — The most popular of all the Kurume azaleas, and the most adaptable variety for forcing. Beautiful shell pink flowers of the hose-in-hose type. Small glossy foliage, and compact grower.

**FIREFLY** — Brilliant red. Large single flowers. Hardy compact grower.

**FLAME** — Brilliant red, suffused with copper, bright and showy. Upright fast grower with good foliage.

**FORTUNE** — Compact, bright salmon pink hose-in-hose. Medium size flowers. Mid-season bloomer.

**GARDENIA SUPREME** — Pure white. Hose-in-hose. Dark green foliage. Vigorous grower.

**HEXE** — Slow, compact grower, with showy deep scarlet, hose-in-hose flowers.

**HINODEGIRI** — Brilliant red flowers. Profuse bloomer, low bushy plants. Mid-season. Very good for pot plants.

**HORTENSIA** — Large soft pink. Hose-in-hose. Blossoms produced in large trusses.

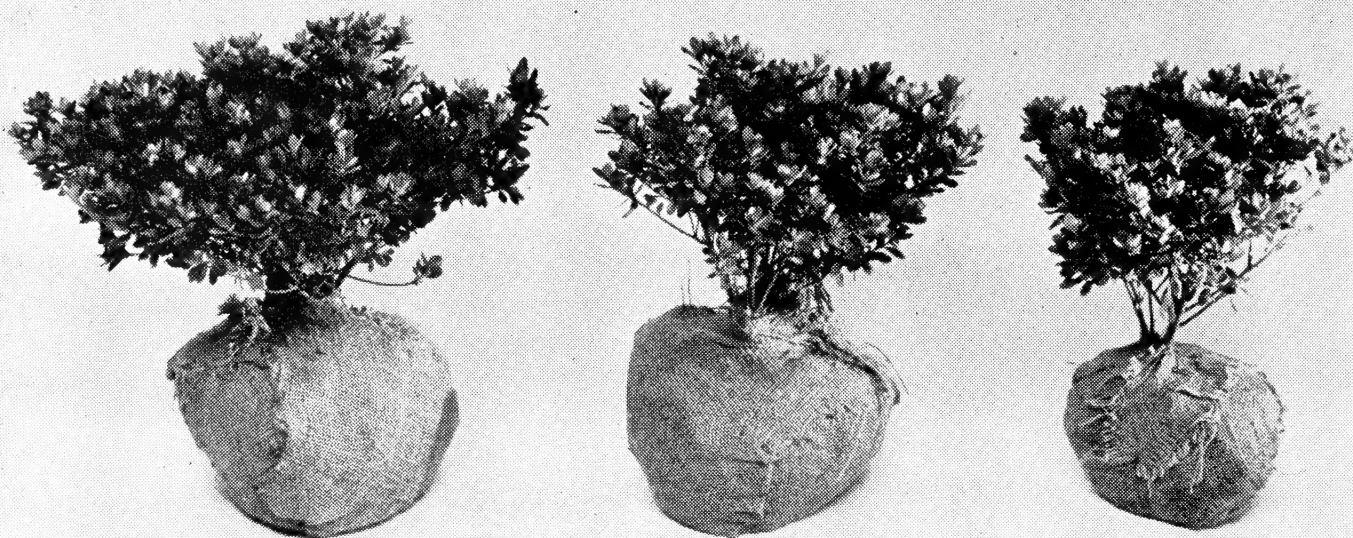
KAEMPFERI — Large single brilliant red blooms. Vigorous upright grower. Late bloomer. Hardy.

LAVENDER QUEEN — Light lavender. Very free flowering. Slow, compact grower with dark green foliage.

MADAM PERICAT — Light pink hose-in-hose. Late bloomer. Vigorous grower.

MAUVE BEAUTY — Flowers of a delicate mauve shade literally cover the entire plant. Compact, dwarf grower.

PEACH BLOW — Single flowers of a beautiful shade of peach-pink, and having ruffled edges. Early.



10-12"

8-10"

6-8"

CORAL BELL, Field Grown—These field grown Kurume Azaleas have an exceptionally heavy bud-set and are nice for pot plant use.

PINK PEARL — Beautiful salmon, hose-in-hose flowers, produced in large clusters. Fast grower, early.

PINNOCHIO — Free flowering, rusty red. Compact, with good foliage.

SALMON BEAUTY — Large hose-in-hose deep salmon flowers, large glossy green leaves. Mid-season.

SNOW — Pure snow-white hose-in-hose type. Compact grower and profuse bloomer. Mid-season. Very popular.

SWEET BRIER — Medium size single pink flowers. Very hardy.

SWEETHEART SUPREME — Medium size blush pink. Hose-in-hose blossoms. Excellent compact grower.

Azalea orders may be addressed to Flowerwood Nursery in Mobile or Loxley, Alabama.

### **EXTRA FINE AZALEA LINERS FOR SPRING DELIVERY**

Again we will be able to offer first quality azalea liners for Spring delivery. These azaleas were transplanted to cold frames early and are now growing into compact, heavy rooted plants.

Many retail nurserymen have profited by taking advantage of Flowerwood packaged azalea liners in bundles of ten for resale. Don't omit this profitable item in your spring sales.

#### **Indica Liners**

Daphne Salmon (Lawsal)	Latana Alba
Duc de Rohan	Lilacina
Fielders White	Moss Point Red
Fishers Pink	President Clay
Formosa	Pride of Dorking
Glory of Sunnyhill	Pride of Mobile
Indica Alba	Southern Charm
Judge Solomon	Sublanceolata

#### **Kurume Liners**

Apple Blossom	Madam Pericat
Bridesmaid	Mauve Beauty
Christmas Cheer	Peach Blow
Coral Bells	Pink Pearl
Firefly	Pinnochio
Flame	Salmon Beauty
Fortune	Salmon Queen
Hexe	Snow
Hinodegiri	Sweet Brier
Hortensia	Sweetheart
Kaempferi	Supreme
Macrantha	Yae-Giri

## Budded Azaleas

The following azaleas are well shaped, heavy rooted stock, either lath or field grown.

All azalea prices are based on plants being dug and shipped without burlap around the root ball. If requested, azaleas will be burlapped at an extra charge to cover actual cost.

## Indica Azaleas

Daphne Salmon	Lilacina
Elegans	Moss Point Red
Fishers Pink	Orchid
Formosa	Phoenicia
Glory of Sunnyhill	President Clay
Indica Alba	Pride of Mobile
Indica Rosea	Southern Charm
Latana Alba	Sublanceolata

### Prices of Indica Azaleas

	Each	10	100
8-10 inch, with buds.....	\$ .45	\$ 4.00	\$ 35.00
10-12 inch, with buds.....	.60	5.50	50.00
12-18 inch, with buds.....	.85	8.00	75.00
18-24 inch, with buds.....	1.20	11.50	110.00
24-30 inch, with buds.....	1.50	13.00	125.00

## Kurume Azaleas

Apple Blossom	Kaempferi
Bridesmaid	Lavender Queen
China Sea	Madam Pericat
Christmas Cheer	Mauve Beauty
Coral Bell	Peach Blow
Firefly	Pink Pearl
Flame	Pinochio
Fortune	Salmon Beauty
Gardenia Supreme	Snow
Hexe	Sweet Brier
Hinodegiri	Sweetheart
Hortensia	Supreme

## Prices of Kurume Azaleas

	Each	10	100
4- 6 inch, with buds.....	\$ .50	\$ 4.50	\$ 40.00
6- 8 inch, with buds.....	.65	6.00	55.00
8-10 inch, with buds.....	.85	8.00	75.00
10-12 inch, with buds.....	1.10	10.50	100.00
12-18 inch, with buds.....	1.35	13.00	125.00
18-24 inch, with buds.....	1.65	16.00	150.00

## C A M E L L I A S

Camellias will grow and prosper under widely varying conditions as to soil and temperatures, but it is absolutely essential that they have good drainage. Some of the paramount factors to consider in camellia culture are as follows:

1. Plant in well-drained acid soil.
2. Plants should be set in ground at same level as it was grown. **DO NOT PLANT TOO DEEP!**
3. Water during periods of drouth during first summer after transplanting.
4. Fertilize with balanced fertilizer in February and July each year.
5. Keep plants free of insect pests. See spray schedule on page 34.

Generally it is sufficient to spray in the spring and again in the fall, but if a plant is badly infested with disease we recommend spraying every three weeks until the scale is killed.\*

Address all Camellia Orders to Flowerwood Nursery,  
Loxley, Alabama.

## LINING OUT STOCK CAMELLIA LINERS

Don't overlook these wonderful plants in your planting for next season. Come see them and you will agree that we have the finest crop of camellia liners you have ever seen. The following steps were taken to assure you of getting heavy-rooted, vigorous, disease-free stock.

1. Planted in well-drained new soil.
2. Generous application of peat to provide aeration.

3. Beds were raised six inches to further insure proper drainage.
4. Fumigated beds with double dose of MC-2 as further insurance against soil borne diseases, insects, and weed seed.
5. Plants were spaced so as to give ample growing room.
6. Spray schedule was strictly followed to eliminate scales and other insects.
7. Fertilized lightly with a balanced complete fertilizer.

We feel sure the above practices have been responsible for the excellent camellia liners we have to offer this season.

### Packaged Camellia Liners For Resale

Contact us for details about our special offer of camellia liners wrapped 5 to a package for retail sales. A camellia liner promotion can stimulate your sales as it did for many last season.

### Outstanding Camellia Liners

Variety	6-8"	8-12"	12-18"
Admiral Nimitz .....	\$ .40	\$ .45	\$ .50
Ara-Jishi .....	.40	.45	.50
Adolphe Audusson .....	.40	.45	.50
Adolphe Audusson, Var. ....	.40	.45	.50
Big Beauty .....	.40	.45	.50
Black Dragon .....	.40	.45	.50
Black Dragon, Var. ....	.40	.45	.50
Campbell Ashley .....	.40	.45	.50
Daikagura .....	.40	.45	.50
Daikagura, Var. ....	.40	.45	.50
Elizabeth Boardman .....	.40	.45	.50
Eugene Lizze .....	.40	.45	.50
Glen 40 .....	.40	.45	.50
Haku-Rakuten .....	.40	.45	.50
Letita Schrader .....	.40	.45	.50
Lindsey Neil .....	.40	.45	.50
Margarete Hertrich .....	.40	.45	.50
Mary Charlotte .....	.40	.45	.50
Mrs. Walter Allen .....	.40	.45	.50
Rosea Superba .....	.40	.45	.50
Ruth Royer .....	.40	.45	.50
St. Andre .....	.40	.45	.50
Virgins Blush .....	.40	.45	.50
Woodville Red .....	.40	.45	.50
Yuki-Botan .....	.40	.45	.50

## Rare Camellia Liners

MINIMUM ORDER — 5 OF A VARIETY

Variety	6-8"	8-12"	12-18"
Debutante .....	\$ .30	\$ .35	\$ .40
Duchess of Sutherland .....	.30	.35	.40
Goshoguruma .....	.30	.35	.40
Lady Van Sittart .....	.30	.35	.40
La Reine, Var. ....	.30	.35	.40
Laurel Leaf .....	.30	.35	.40
Lurie's Favorite .....	.30	.35	.40
Madame Chiang Kai-Shek .....	.30	.35	.40
Madge Miller .....	.30	.35	.40
Magnoliaflora .....	.30	.35	.40
Mathotiana Rubra .....	.30	.35	.40
Mathotiana Variant .....	.30	.35	.40
Mrs. Chas. Cobb .....	.30	.35	.40
Rasen Zome .....	.30	.35	.40
Rev. John Bennett .....	.30	.35	.40
White Empress .....	.30	.35	.40

## Camellia Liners

Class A-1

MINIMUM ORDER — 10 OF A VARIETY

Variety	6-8"	8-12"	12-18"
Alba Plena .....	\$ .25	\$ .30	\$ .35
Col. Fiery .....	.25	.30	.35
Colletti .....	.25	.30	.35
Empress .....	.25	.30	.35
Florence Stratton .....	.25	.30	.35
Gigantea .....	.25	.30	.35
Gov. Mouton .....	.25	.30	.35
Margaret Higdon .....	.25	.30	.35
Nagasaki .....	.25	.30	.35
Pink Star .....	.25	.30	.35
Princess Nagaskie .....	.25	.30	.35
Queen Bessie .....	.25	.30	.35
Rev. John G. Drayton .....	.25	.30	.35
Sara-Sa .....	.25	.30	.35
Scarlett O'Hara .....	.25	.30	.35
Sept. Morn .....	.25	.30	.35
Snowdrift .....	.25	.30	.35
Victory White .....	.25	.30	.35
White Giant .....	.25	.30	.35

## Camellia Liners

### Class A

MINIMUM ORDER — 10 OF A VARIETY

Variety	6-8"	8-12"	12-18"
Chandleri Elegans .....	\$ .20	\$ .25	\$ .30
Duncan Bell .....	.20	.25	.30
Eleanor Haygood .....	.20	.25	.30
Elizabeth Arden .....	.20	.25	.30
Fanny Bolis .....	.20	.25	.30
Festiva .....	.20	.25	.30
Herme .....	.20	.25	.30
Monarch .....	.20	.25	.30
Pink Perfection .....	.20	.25	.30
Pride of Houston .....	.20	.25	.30
Prince Eugene Napoleon .....	.20	.25	.30
Smiling Beauty .....	.20	.25	.30
Victor Emanuel .....	.20	.25	.30
Waterloo .....	.20	.25	.30

## Camellia Liners

### Class B

MINIMUM ORDER — 10 OF A VARIETY

Variety	6-8"	8-12"	12-18"
Elizabeth .....	\$ .15	\$ .20	\$ .25
Jarvis Red .....	.15	.20	.25
Kellingtonia .....	.15	.20	.25
Prof. Sargent .....	.15	.20	.25
Sarah Frost .....	.15	.20	.25
Warrata .....	.15	.20	.25

## Camellia Sasanqua Liners

MINIMUM ORDER — 10 OF A VARIETY

	10	100	1000
<b>DAWN</b>			
6- 8 inch .....	\$1.50	\$14.00	\$130.00
8-12 inch .....	2.00	17.50	150.00
<b>MINE-NO-YUKI</b>			
6- 8 inch .....	1.50	13.50	125.00
8-12 inch .....	1.75	16.50	150.00
12-18 inch .....	2.50	24.00	220.00
<b>ROSEA</b>			
6- 8 inch .....	1.25	11.00	100.00
8-12 inch .....	1.50	13.50	125.00
12-18 inch .....	2.50	17.50	150.00
<b>TEXAS STAR</b>			
6- 8 inch .....	1.50	14.00	130.00
8-12 inch .....	2.00	17.50	150.00

Address all Camellia Orders to Flowerwood Nursery,  
Loxley, Alabama.



## SUGGESTIONS FOR PLANTING CAMELLIA AND SASANQUA LINERS

These liners should be planted in a well-prepared bed or field with a Ph of 4.5 to 6.0. It is very important that they have good drainage and that they not be planted too deep. We set out plants in the field in 42" rows about 22" apart and cultivate with a tractor. The above is only mentioned as a suggestion as different conditions will take different planting.

### Rare Camellia Grafts

We are only listing grafts of the new varieties which we consider extra fine. We have limited quantities of other rare varieties one- and two-year grafts. We invite your inquiry, if you are interested in varieties not listed.

#### EXTRA FINE NEW VARIETIES

**MATHOTIANA SUPREME** — Sport of the all-time favorite Purple Dawn. An immense semi-double. Scarlet bloom with golden stamens interspersed among the curled center petals. Growth and foliar characteristics same as parent variety.

**Grafts.....\$12.50**

**RUTH ROYER** — This beautiful flower is a sport from the Pink Duchess of Sutherland. It is pink and white with moire markings.

**Grafts.....\$10.00 Each**

**JOSHUA YOUTZ** — Large, semi-double to loose peony blooms of pure waxy white. Blooms in the fall along with the Daikaguras and is similar in size and shape.

**Grafts.....\$12.50**

Prince of Orange  
High Hat  
Dorothea Blanche  
Mary Charlotte  
Bessie Morse Bellingrath  
Rosea Superba, Var.

Thelma Dale  
Black Dragon  
Admiral Nimitz  
Woodville Red  
Yuki-Botan  
Tinsley

**2 year grafts.....\$12.50**



MINE-NO-YUKI

DAWN

MINE-NO-YUKI

2-3 ft. Field Grown Sasanqua

## CAMELLIAS

Practically our entire stock of camellias this season will be sturdy field-grown plants.

Past experience has shown that the retailer needs a budded camellia, grown slowly enough to resist cold damage. Come by and let us show you these compact well-budded camellias, sure to be money makers.

### Rare Camellias, Group I

Admiral Nimitz  
 Anne Lindberg  
 Ara-Jishi  
 Audusson  
 Audusson, Var.  
 Bessie Bellingrath

Big Beauty  
 Black Dragon  
 Campbell Ashley  
 Capt. Martins Favorite  
 Daikagura  
 Elizabeth Boardman

Eugene Lizze	Magnoliaflora	Ruth Royer
French Emperor	Marchioness of	St. Andre
Haku-Rakuten	Exeter	Swan
La Reine, Var.	Mrs. Walter Allen	Virgins Blush
Lindsey Neil	Nessle Rode	White Herme
Madame Chiang	Rosea Superba	Woodville Red
Kai-Shek	Rose Dawn	Yuki-Botan

### Prices Rare Camellias, Group I

Priced each	Bareroot	B&B
12-18 inch, Branched .....	\$2.25	\$ 2.50
18-24 inch, Branched .....	3.75	4.00
24-30 inch, Light Specimen .....		7.00
2-2½ feet, Specimen .....		12.50
2½-3 feet, Specimen .....		15.00

Address all Camellia Orders to Flowerwood Nursery,  
Loxley, Alabama.

### Rare Camellias, Group II

Alba Plena	Kumasaka	Rasen Zome
Colletti	Kumasaka, Var.	Rev. J. G. Drayton
Col. Fiery	Lady Van Sittart	Rev. John Bennett
Debutante	Laurel Leaf	Sara-Sa
Duchess of	Madge Miller	Scarlett O'Hara
Sutherland	Mathotiana Rubra	Sept. Morn
Emperor of Russia	Mathotiana Variant	Snowdrift
Florence Stratton	Mrs. Chas. Cobb	St. Elmo
Goshoguruma	Nagasaki	Suibijin
Gov. Mouton	Pink Ball	Sweeti Vera
H. A. Downing	Pink Star	White Empress
IL Tramento	Princess Nagaskie	

### Prices on Rare Camellias, Group II

Prices each	Barefoot	B&B
12-18 inch, Branched .....	\$1.25	\$ 1.50
18-24 inch, Branched .....	2.00	2.50
24-30 inch, Light Specimen .....		4.00
2-2½ feet, Specimen .....		7.50
2½-3 feet, Specimen .....		10.00

## Camellias, Class A-1

Anna Frost	Elizabeth Arden	Otome
Brilliant	Empress	Pink Perfection
Candidissima	Fanny Bollis	Pride of Houston
Chandleri Elegans	Gigantea	Queen Bessie
Corine Fonde	Herme	Smiling Beauty
Duncan Bell	Margaret Higdon	Victor Emanuel
Eleanor Haygood	Margharita Caleoni	Victory White
Elena Nobile	Monarch	Waterloo

### Prices Camellias, Class A-1

Priced each	Barefoot	B&B
12-18 inch, Branched .....	\$1.00	\$ 1.25
18-24 inch, Branched .....		1.75
24-30 inch, Light Specimen .....		2.50
2-2½ feet, Specimen .....		6.00
2½-3 feet, Specimen .....		8.00
3- 4 feet, Specimen .....		10.00

## Camellias, Class A

Abby Wilder	Cup of Beauty	Nishiki Gasane
After Glow	Deep Red	Prince Eugene
Amabilis	Derbiana	Napoleon
Anna Zucchini	Duc de Orleans	Prof. Sargent
Ama-No-Kawa	Elizabeth	Queen of Hearts
Austill Pink	Emperor	Rainy Sun
Bealli Rosea	Empress of India	Red Prince
Bealli Romana	Enrico Bettoni	Rose Emory
Caldwell	Fishers Rose	Sarah Frost
Cameo Pink	Jarvis Red	Shell Pink
Caprice	Kellingtonia	Surprise
Cardinal Richielieu	Mon Louis Pink	T. K. Var.
Concordia	Moss Point, Var.	White Hibiscus

### Prices Camellias, Class A

Priced each	Bareroot	B&B
18-24 inch, Branched .....	\$ .95	\$ 1.25
2-2½ feet, Light Specimen .....		2.00
2-2½ feet, Specimen .....		4.50
2½-3 feet, Specimen .....		6.00
3- 4 feet, Specimen .....		8.50

Address all Camellia Orders to Flowerwood Nursery,  
Loxley, Alabama.

## Camellia Sasanqua

A very hardy species of Camellia that blooms in the fall when nothing else is in color. It is much hardier than Camellia Japonica and will grow in a wider soil range and will stand a greater excess of moisture.

ROSEA — Deep rose pink. Single. Profuse bloomer.

MINE-NO-YUKI — White, large, full peony form. Tall spreading growth. Light green foliage.

DAWN — Large, semi-double white, sometimes with a delicate flesh pink shade.

TEXAS STAR — Small single pink blooms. Very fast upright grower of columnar form.

### Prices Camellia Sasanqua

Dawn

Mine-No-Yuki (Snow on the Mountain)

Rosea

Texas Star

Priced each	Bareroot	B&B
2-3 feet, Branched .....	\$1.00	\$1.25
3-4 feet, Branched .....		2.00



BUXUS JAPONICA



ILEX CRENATA ROTUNDIFOLIA



24-30 inch, Light Specimen Camellia B&B



18-24 inch, Branch



hed Camellia B&B



12-18 inch, Branched Camellia B&B

## ORIENTAL MAGNOLIAS

MAGNOLIA NIGRA — Dark Purple. A late bloomer and not quite so hardy as Soulangeana.

12-18" B.R.	.....	\$ .25
18-24" B.R.	.....	.30
2- 3'	.....	2.00

MAGNOLIA SOULANGEANA — Very hardy, fast growing, and one of the most sought-after plants for use all over the United States.

2- 3'	.....	\$2.00
-------	-------	--------

## BROAD-LEAVED EVERGREENS

BUXUS JAPONICA — Fairly fast growing box with light colored roundish leaves. Does well in full sun.

12-15"	.....	\$ .75
15-18"	.....	1.00

GARDENIA FORTUNEI — Very glossy foliage. Good grower. Blooms more than other varieties.

8-12"	.....	\$ .10
-------	-------	--------

GARDENIA HADLEY — Compact, grower with round glossy green leaves. Very profuse bloomer.

8-12"	.....	\$ .10
-------	-------	--------

ILEX CORNUTA BURFORDI — Chinese Holly. One of the finest hollies for the South, with dark green shiny foliage and large red berries.

6- 8"	.....	\$ .10
8-12"	.....	.12½

ILEX CRENATA ROTUNDIFOLIA — Medium-sized, round leaves similar to boxwood. Very hardy.

6- 8"	.....	\$ .10
8-12"	.....	.12½
12-15"	.....	.75
15-18"	.....	1.25

## HOUSE PLANTS

High quality greenhouse grown pot plants.

Shipped in paper pots Express collect or Parcel Post when postage is included with order.



NEPHTHYTIS



POTHOS AUREUS



PHILODENDRON



PEPEROMIA



<b>COLEUS — All brilliant colors</b> .....	<b>2¼"</b>	<b>\$ 6.00 per 100</b>
<b>POTHOS-AUREUS</b> .....	<b>2¼"</b>	<b>10.00 per 100</b>
<b>PHILODENDRONS</b> .....	<b>2¼"</b>	<b>10.00 per 100</b>
<b>NEPHTHYTIS</b> .....	<b>2¼"</b>	<b>10.00 per 100</b>
<b>PEPPEROMIA</b> .....	<b>2¼"</b>	<b>10.00 per 100</b>
<b>IVY, small leaf, self-branching</b> .....	<b>2¼"</b>	<b>10.00 per 100</b>

## DESCRIPTION OF CAMELLIAS

**ABBY WILDER** — Peony shaped double white flowers of medium size. Some of the flowers have an occasional stripe of pink. This is a fast grower, and makes a fine bush.

**ADMIRAL NIMITZ (Kishu Tsukasa)** — The leaves are straight, light green, pointed and heavily grained, similar to Laurel Leaf. Flower is large and a beautiful shade of pink with an occasional petal mottled with white. Flower opens flat, mid-season to late bloomer.

**ADOLPHE AUDUSSON** — This is one of the finest types of semi-double camellias, varying from deep red to red and white variegated, with very large 5 to 6-inch blooms, with prominent stamens irregularly arranged among the heavy textured good petals. Handsome, large deep green leaves.

**ADOLPHE AUDUSSON SPECIAL** — Sport of Adolphe Audusson, flowers having a particularly beautiful variegation and oftentimes comes with extra petals interspersed with the stamens.

**AFTERGLOW** — Cup shaped, semi-double white with pink stripes.

**ALBA PLENA** — The finest of all white camellias. The pure white, wax-like full double flowers are about 4 inches in diameter, of perfect symmetry. Splendid for cut flowers. Harder to propagate than most varieties.

**AMA-NO-KAWA** — Semi-double white — A very vigorous grower.

**ANNA FROST** — Semi-double, large loose peony type, dark blood red in color. Large, round and thick green shiny leaves.

**ANNA ZUCCHINI** — Medium, semi-double white with occasional solid pink sport. Medium compact growth.

**ANNE LINDBERGH** — Medium sized, semi-peony form. Rose-red, vigorous upright growth.

ARA-JISHI (Aloha) — Large, double, salmon-red, peony type flower. It blooms very early. The first flowers come in July and often times blooms through the camellia season. Because of the early blooming habit, we expect this camellia to be very popular in the areas which have damage from cold weather.

AUSTILL PINK — Light pink, medium, semi-double to peony form.

BEALLI ROSEA — Double rose pink, which when first opening the flowers resemble a rose bud. The natural habit is for this variety to grow into a round compact bush.

BELLA ROMANA (Madam Strekaloff) — A medium sized camellia, with large light pink petals profusely striped and splashed with streaks of crimson.

BESSIE MORSE BELLINGRATH (Toki-No-Hagasane) — A large semi-double flower white with a faint blush of pink. A compact grower which blooms mid-season.

BIG BEAUTY — White blotched and dashed pink. Large, semi-double to semi-peony form. Vigorous, upright growth.

BLACK DRAGON — This is the English translation of a Japanese name of this variety which we imported from Japan before the war. It is an outstanding camellia. Flowers are very large and very dark red and resemble in color Mrs. Charles Cobb and in form of the Victor Emanuel. The edges of the petals are crimped and are of a much deeper shade than the balance of the flower. The flowers that we have exhibited have attracted a great deal of attention.

BLACK DRAGON, VAR. — Same as black Dragon with flecks of white. Contrast of dark red and white makes this bloom very striking.

BLUSH HIBISCUS — A very large semi-double white with blush pink center. It makes a vigorous upright spreading type growth.

BRILLIANT — Full double red. Petals curve slightly at edges. Mid-season bloomer.

CALDWELL — Peony form light pink flowers the size and shape of Professor Sargent.

CAMEO PINK — A very lovely camellia of a soft delicate shade of pink. Full double symmetrical form, showing golden stamens in center when fully open.

CAMPBELL ASHLEY — Large red semi-double blooms. Petals of crepe texture. Vigorous grower. Blooms especially well during and after cold weather.

- CAMPBELL ASHLEY, Var. — Same type and characteristics as Campbell Ashley only is dark red and white.
- CANDIDISSIMA — A pure white full-double. A very profuse late season bloomer. Slow compact type growth.
- CAPRICE — Medium peony white. Vigorous-upright grower. Mid-season bloomer.
- CAPTAIN MARTIN'S FAVORITE — Full double flowers of a deep pink color splotted with white. A slow upright compact grower. Mid-season bloomer.
- CARDINAL RICHELIEU — Large semi-double to loose peony form. Rose Red. Vigorous compact grower. Mid-season to late bloomer.
- CHANDLERI ELEGANS — A most spectacular camellia. Large, loose peony form flowers, 5-6 inches in diameter, with broad outer flat petals, and a thick center cluster of petaloids interspersed with yellow stamens. Variegated, cherry red to light pink, splotted with white. A heavy bloomer, with dark green shiny foliage.
- C. M. WILSON — A light pink sport of Ch.Elegans. This is an outstanding camellia with all the features of the Ch. Elegans.
- COLLETTI MACULATA — A variegated peony form dark red and pure white, some flowers having the white predominating and some predominantly red. The petals vary from small petals in the center to large flat petals on the outer edge. A very few stamens show in the middle.
- COL. FIREY (Mississippi Hastie) — A large deep crimson extremely double flower. Late bloomer. Dark green foliage.
- CONCORDIA (Prince Albert) — Pink and white variegated peony form. Occasionally there is an all pink flower, and sometimes there are both peony and rose form flowers on the same plant.
- CORINNE FONDE — Incomplete double, orange-red compact grower.
- CUP OF BEAUTY — Semi-double, deep pink, vigorous bushy growth.
- DAIKAGURA — An outstanding camellia with large, thick peony type blossoms. Sometimes solid pink and other times pink splotted with white.
- DAITERIN (Pink Fimbriata) — Light rose pink. Large, single with mass of petaloids in center. A very fine single.
- DEBUTANTE — Large, full peony form, shell pink. Vigorous grower. Early to mid-season bloomer.

DEEP RED — Mid-season — Medium size, peony type red blooms.

DERBIANA — Semi-double to peony form dark red with stamens intermingled with petaloids in center. Very vigorous grower.

DONCKELAARI — A very large semi-double red slightly marbled with white. Slow bushy growth.

DORIS MADALIA — Large, semi-double, dark pink blooms marbled with white. Often shows stamens intermingled with twisted petals in the center.

DOROTHEA BLANCHE — Delicate pink shaded white. Large, semi-double to peony form. Vigorous upright growth. Mid-season bloomer.

DUC D' ORLEANS (Marguerite Guillon) — A semi-double pink and white, often solid pink, with stamens interspersed with inner petals. A very free bloomer.

DUCHESS OF SUTHERLAND — Large semi-double creamy white, with one or two pink stripes on one petal. The outer petals are large and flat, and the inner petals are curled. Has prominent circles of stamens. This beautifully formed camellia is considered one of the finest of the Magnolia Garden varieties.

DUNCAN BELL (Mrs. Meno A. Ladnier) — The blossoms are six inches in diameter, a beautiful orange-red, with large flat, regularly imbricated outer petals, and numerous irregularly arranged small petals in the center, different from any other camellia we have seen. A fast, tall-growing plant, with giant shiny leaves.

ELEANOR HAYGOOD — Large, delicate, pale pink. Rose form, late bloomer, vigorous bloomer.

ELENA NOBILE — Imbricated, medium sized flame red flower, blooms in mid-season.

ELIZABETH (Montironi) — Porcelain white, occasionally a flower will have some pink in it, or there may be an all-pink bloom. The edges of the petals are incurved. A beautiful flower and a handsome evergreen.

ELIZABETH ARDEN — Double variegated, color ranging from white with rose stripe to rose. Blossoms when first open have a rose-bud center but later show stamens. A vigorous healthy growing plant.

ELIZABETH BOARDMAN — White. Large to very large, Hemispherical, fluted, semi-double. Medium compact upright growth.

EMPERATOR — Medium size, deep red, semi-double with petaloids intermingled with stamens.

EMPEROR OF RUSSIA — Large, multicentered double to peony form scarlet red. Slow compact grower. Mid-season.

EMPRESS (Lady Claire, Grandiflora Rosea) — Very large, 6 to 7 inches, semi-double flower. Its broad petals of deep rich pink are arranged around a center cluster of yellow stamens. A strikingly beautiful flower.

EMPRESS OF INDIA — Peony shaped flower of a very unusual and beautiful shade of salmon-pink. Has several outer rows of imbricated petals, with a full center of smaller petals.

ENRICO BETTONI — A large semi-double rose pink. A very heavy bloomer.

EUGENE LIZZE — Beautiful, semi-double to loose peony-form, cherry-red marbled with white. This is said to be a sport of Donckelaari and has its characteristics of growth.

FANNY BOLLIS — Large semi-double red flowers, boldly blotched with white, with enormous heavy-textured petals. The deep green leaves are very thick and rather convex.

FESTIVA — Medium size double-rose red blooms.

FISHER'S ROSE — Peony type, rose pink, vigorous upright grower.

FLORENCE STRATTON — Very large formal double. Coloring varies from solid white to solid pink. When flowers are fully open they are very symmetrical with the tips of the petals incurved in a circular design. The flowers exhibited last year in shows caused a great deal of interest. The foliage is very large, crinkled and light green. Very vigorous grower.

FRENCH EMPERATOR — Probably the largest peony type bloom. Soft pink with satiny texture. Very fast upright grower.

GALILEE — Very large, semi-double to loose peony type, pink, vigorous slender growth.

GEN. GEORGE PATTON — Full double, imbricated blossom of the brightest pink. Vigorous upright open growth.

GIGANTEA — An immense semi-double red with white markings and prominent circle of stamens. Large foliage, irregular upright growth.

- GIGANTEA ALBA — White. Very large, single. Vigorous upright growth.
- GLEN 40 — Deep red. Large, formal to rose form double. Slow, compact, upright growth.
- GLOIRE DE NANTES (Leana Superba) — A large semi-double vivid red flower, with long yellow stamens interspersed with the center petals. Thick dark green, waxy leaves. A very compact grower.
- GOSHOGURUMA — Large semi-double dark red with very prominent mass of stamens in center. Compact slow grower. Mid-season.
- GOVERNOR MOUTON — A free-blooming variety, with medium size peony form flowers, varying from solid dark red to red and white. The flowers resemble somewhat the Colletti Maculata, but the red is not as brilliant, and the outer petals are generally spreading in habit of growth.
- H. A. DOWNING — Very large, loose semi-double flowers of deep red, with stamens showing among the petals. A bushy, slow-growing variety, and late bloomer.
- HAKU-BAI — Medium size, semi-double white blooms.
- HAKU-RAKUTEN — The flowers are large, semi-peony form, and pure white in color. Vigorous grower.
- HERME (Jordan's Pride, Hikari-Genji, Jenny Lind) — Very large, semi-double white flowers, with red and pink stripes and splotches. Slightly fragrant. Early bloomer, tall, rapid grower. One of the most popular and most satisfactory of all camellias.
- HERME, PINK — Deep pink Sport of Herme.
- HIGH HAT — Sport of Daikagura. Large loose peony form flower of a pale pink.
- ILL TREMENTO — Formal double light pink with specks of white. Similar to Laurel Leaf only in flower. Mid-season bloomer. Compact grower.
- JARVIS RED — Deep scarlet red, semi-double, with yellow stamens; heavy bloomer. A beautiful and most satisfactory garden variety that holds its popularity year after year.
- KELLINGTONIA — Red and white peony type flower. Blooms heavily every year. A rapid, compact grower, with dark green, glossy leaves.
- KENNY — Semi-double deep rose pink with a few white blotches in center. Compact grower.

**KUMASAKA** (Beni-Korake, Lady Marion) — One of the finest of all pinks. A deep glowing pink with very broad outer petals around a large inner circle of curled petaloids. When fully open, some stamens show through the petaloids.

**KUMASAKA, Var.** — A variegated form of Kumasaka — Rose pink blotched white.

**LADY CHARLOTTE** — Clear Pale Pink. Large, semi-double. Vigorous, upright, compact growth.

**LADY MARY CROMARTIE** — Extremely large deep pink semi-double camellia, showing stamens in clustered arrangement. This flower frequently has abundant petaloids among the stamens.

**LADY VAN SITTART** — A medium sized semi-double with three rows of broad wavy edged petals showing golden stamens in center. A very heavy bloomer.

**LA REINE VARIEGATED** — Believed to be a Sport of Lady Mary Cromartie. Same type flower except for large spots of white variegation.

**LAUREL LEAF** (Lallarook) — Imbricated full-double of perfect symmetry, with a salmon rose-pink center, shading to a deeper rose on the tips of the incurved petals. Some blooms have small flecks of white variegation.

**LETITIA SCHRADER** — Dark red, very large, medallion shaped peony form. Medium compact upright growth.

**LIBERTY BELL** — White. Large, semi-peony form. Vigorous, semi-upright growth.

**LILA ROSA** — Clear pink, large full peony form. Vigorous Compact growth.

**LINDSEY NEIL** — Beautiful semi-double to peony form, dark red with well defined white markings. Petaloids intermingled with stamens. Dependable bloomer, very slow compact grower.

**LUCILLE FLANAGAN** — A very large red, semi-double with trumpet of petaloids.

**LURIE'S FAVORITE** — Soft lavender pink. Large, semi-double. Vigorous, compact, upright growth.

**MADAME CHIANG KAI-SHEK** — Large semi-double deep rose-pink flecked with white with prominent circle of stamens. Beautiful in its simplicity.

**MADGE MILLER** — A large white incomplete double, medium upright growth.

MAGNOLIAFLORA — An unusual shaped blossom of the most delicate shade of blush pink. Nine to ten large petals in a double row open concavely around a small center group of loosely curled inner petaloids with a few golden stamens.

MARCHIONESS OF EXETER — Beautiful light pink, large full peony form. Vigorous spreading loose growth.

MARGARETE HERTRICH — Large, white, formal, double. Vigorous upright grower.

MARGARET HIGDON — Large semi-double rose pink, dark green foliage, upright grower. Dependable mid-season bloomer.

MARGARET HIGDON, VAR. — Same type and characteristics as Margaret Higdon only is variegated.

MARGHARITA CALEONI — Formal double flower with very unusual red and white markings. Has large rosebud center. Good grower and profuse bloomer.

MARY CHARLOTTE — A beautiful shade of delicate pink. Medium large, flat peony form. Vigorous, compact, upright growth.

MARY E. M. (Rev. John G. Drayton) — A loose peony-like flower of deep pink, wavy petals, intermingled with golden stamens. Light green foliage, late bloomer.

MATHOTIANA RUBRA (Purple Dawn, Purple Emperor) — An immense, full double, rose form flower of lake purple, the outer edges of which turn deep purple as the flower gets older. When fully open it shows short stamens in the center. Due to grafting and intensive propagation this variety often sports a variegated flower.

MATHOTIANA VARIANT (C. M. Hovey) — Very double camellia with a high pointed center. The huge flowers are a uniform shade of brilliant scarlet with pure white blotches. The very large petals are beautifully veined and textured.

MEIGS, VARIEGATED — Full double blooms. Pink and white variegated.

MONARCH — Deep pink, sometimes spotted white. Large full peony form. Medium compact growth.

MONJISU — Medium-sized rose red, loosely petaled, semi-double. Petals curve up at outer edge. Mid-season bloomer.

MON LOUIS PINK — Vigorous grower with pleasing pink semi-double flaring type flower.



MOSS POINT, VAR. — Pink peony form, mottled with white. Vigorous open grower. Mid-season to late bloomer.

MRS. CHAS. COBB — Full peony form camellia of the deepest red. Very large petals with only a few petaloids. This variety has unusually nice foliage and is a vigorous grower. Among the best in the Magnolia Gardens varieties.

MRS. WALTER ALLEN — Large semi-double, rose red. Vigorous grower, and profuse bloomer.

MRS. WM. THOMPSON — Large semi-double white with a faint tinge of pink.

NAGASAKI (Lady Audrey Buller, Tenninkwan) — A magnificent camellia, with big semi-double blossoms and prominent stamens. The large, thick crinkled petals ranging in color from snow white to carmine, are attractively wavy, and slightly convex in shape.

NESSLE RODE — Medium semi-double white with red stripes, often shading to flesh pink in the center. Compact grower, profuse bloomer.

NISHIKI GASANE — Red semi-double mottled with white. Vigorous compact grower. Mid-season.

OTOME — Medium, formal double, light pink. Slow compact grower. Mid-season to late bloomer.

PAULETTE GODDARD — Red, very large, semi-double to loose peony form. Vigorous, upright growth.

PEARL HARBOR — Dark red. Large, irregular semi-double. Vigorous, upright growth.

PINK BALL — Irregular peony type flower, shell pink color deepens as flower ages. A vigorous, upright grower.

PINK PERFECTION — The most universally popular of all camellias. The medium sized double wax-like flowers, of perfect symmetry and exquisite texture, are a delicate shell pink. Blooms profusely from November to March and begins blooming when quite young. Perfect for corsages and cut flowers.

PINK STAR — Large rose-pink petals heavily veined. Irregular semi-double with inner petals in freshly opened bloom resembling a star.

PRIDE OF DESCANSO — White. Very large, semi-double to loose peony form. Vigorous, upright growth.

PRIDE OF HOUSTON (Ross) — A large semi-double salmon pink flower, with occasional small spots of white. The center petals are loosely twisted among golden stamens. This is a fine variety for cut flowers, as the stems are very long. Among the latest to bloom in the season.

PRINCE EUGENE NAPOLEON (Imbricata Rubra Plena, Pope Pius IX) — Scarlet, full double, heavy bloomer, and good grower. A fine garden variety because of its heavy blooming.

PRINCE OF ORANGE — Orange Red. Large loose peony form. Willowy growth.

PRINCESS NAGASKIE (Chiyoda Nishiki) — A beautiful camellia with large semi-double soft pink blossoms marbled white and rose pink. It makes a vigorous, low spreading type growth.

PROF. C. S. SARGENT — Dark crimson, very full, round peony type. Medium to large-sized flowers, very free bloomer, hardy. A fine standard variety.

QUEEN BESSIE — A white semi-double flower of 3 to 4 inches with stamens. A late bloomer.

QUEEN OF HEARTS — Semi-double ranging in color from pink to white. Almost every bloom on the bush is different. Blooms late.

RAINY SUN — Deep pink, semi-double.

RASEN ZOME — This is a beautiful camellia which we imported from Japan before the war. The leaves are dark green, heavily veined and frequently variegated. The flowers are a very beautiful unusual light pink resembling in form and size the Eugene Lizze. Both the flowers and foliage are beautiful. We think it is one of the new varieties that is well worth having.

RED PRINCE — Red. Large peony form.

REV. JOHN BENNETT — Very large, loose semi-double salmon pink, with prominent stamens. The center petaloids are often streaked with white. The petals are beautifully veined. The plant has long narrow dark green foliage, and is a very good bloomer.

ROSEA SUPERBA, VAR. — Deep rose pink with white variegation. Very large rose form double. Vigorous, compact upright grower. One of the finest varieties.

ROSE DAWN — Large rose pink formal flowers similar in form and shape to Alba Plena. A good many of our plants in this variety come variegated which we think adds to its beauty.

ROSE EMERY — Fire red. Medium, full peony form resembling a carnation.

ROSE GLORY — Light rose pink. Large semi-double. Medium, compact, upright growth.

RUTH ROYER—This beautiful flower is a sport from the Pink Duchess of Sutherland. It is pink and white with moire markings. The shading from clear pink to pure white makes a brilliant blossom. In flower shows it attracts more attention than any we have exhibited.

SARA-SA (Calico) — A large, semi-double, creamy blush white camellia, striped and flecked with purplish red, with approximately twelve large flat round petals. A very lovely flower.

SARAH FROST—Full double, rose form camellia of medium size. Deep rose red, very hardy, strong vigorous grower.

SCARLETT O'HARA — This is a sport of the lovely Colonel Firey. The large, deep scarlet, closely imbricated petals have an occasional small splotch of white. Both of these varieties have long stems which make them very desirable for corsages and cut flowers. Very late blooming variety.

SEPTEMBER MORN (Yokei Haku) — A very early white, generally blooming the first part of September and continuing until about Christmas time. The forms of the flowers vary but usually resemble those of Ch. Elegans. The outer petals are large and frequently very beautifully tinted with a baby pink blush. The petaloids are generally creamy yellow which is the nearest of any camellia to yellow.

SHELL PINK — Medium size peony type—blooms of light pink.

SMILING BEAUTY—Semi-double bloom of a very delicate pink. Dark green foliage.

SNOWDRIFT — A lovely, pure white camellia, with large semi-double blooms. The arrangement of the petals around the center cluster of stamens is very attractive, and the texture of the petals is of a very good, lasting quality.

ST. ANDRE — Very large semi-double bright red. Upright grower. Mid-season.

ST. ELMO (Augusta Wilson) — Soft pink. Medium large, full peony form. Vigorous upright growth.

SUIBIJIN — Light pink flecked white. Large semi-double.

SUKIYA (Camellia Saluenensis) — Very fragrant, small single of a very delicate shade of lavender. Heavy bloomer makes fine shrub.

SURPRISE — Semi-double to peony pink with deeper pink markings.

SWAN — This is a semi-double white with long thin snow-white petals shaped like the Imura and the White Hibiscus. It is a very fast, healthy grower and blooms prolifically which makes it a very desirable camellia.

SWEETI VERA — A loosely formed, irregularly shaped full camellia, the ground color of which is light pink. The large petals are flecked and dashed with a deeper shade of pink, and the center petals, which are slightly scalloped, have stamens interspersed among them.

THELMA DALE — Beautiful shade of pink. Large, irregular semi-double to rose form double. Medium, spreading growth.

TINSLEY — Two-toned flesh pink with the color fading to almost white at the outer edge of the petals. Medium size, semi-double.

T. K. VARIEGATED — Semi-double, medium size. Light pink with darker pink margin. Most dependable variety.

VICTOR EMANUEL (Blood of China) — A huge peony-form flower of deep orange-red. Distinctly different formation of the bloom from any other camellia. Small round leaves, grows bushy and compact.

VICTORY WHITE — Semi-double peony type. Numerous small petaloids are intermixed with stamens.

VIRGINS BLUSH — White flushed faintest pink. Medium, semi-double to peony form. Vigorous upright growth.

WARRATA — Dark Crimson. Medium sized peony form. Vigorous upright grower.

WATERLOO (Etherington White) — Semi-double white flowers, with large petals of crepe texture, the edges of the petals being fluted.

WHITE EMPRESS — Large semi-double white with golden stamens. Early bloomer, attractive dark green foliage.

WHITE GIANT — Semi-double pure white; upright and vigorous grower. Blooms mid-season.

WHITE HERME — Sport of Herme. White with occasional pink pin stripes.

WHITE HIBISCUS — Single to semi-double. Petals long and narrow and snowy white. An early bloomer.

WOODVILLE RED — One of the largest peony form, light red flower. A vigorous upright grower with a light green foliage. It is a very fine camellia.

YUKI-BOTAN — A very fine white camellia with large loose peony type flowers. Large, round glossy green foliage. A good grower and bloomer. Mid-season. We think this is one of our best varieties.

## CONTROL OF INSECT PESTS AND DISEASES

The following spray schedules are taken from Circular 84, of the Agricultural Experiment Station of the Alabama Polytechnic Institute, Auburn, Ala.

### SPRAY SCHEDULE FOR AZALEAS

TIME	Spray	Pests
1. In spring just after blooming	White-oil emulsion* 1 gal. Powdered derris 1½ lbs. Black-Leaf 40—1 pt. Water 100 gals.	Lacebug Thrips Mites
2. Last of May or first of June	ditto	Mealybug Lacebug Thrips Mites Peony scale
3. Last of Sept.	ditto	ditto

### SPRAY SCHEDULE FOR CAMELLIAS

TIME	Spray	Pests
1. First of April	White-oil emulsion* 2 gals. Water 100 gals.	Scale insects Mites
2. Last of Sept.	White-oil emulsion* 1½ gals. Water 100 gals.	Scale insects Mites

### PROPORTIONS FOR MIXING AZALEA SPRAYS

Water	White-oil emulsion	Powdered derris	Black-Leaf 40
1 gal.	3 level tablespoons	2 level tablespoons	1 teaspoon
6 gals.	½ pint	1½ ozs.	6 teaspoons
12 gals.	1 pint	3 ozs.	2 ozs.
50 gals.	½ gal.	¾ lb.	½ pint
100 gals.	1 gal.	1½ lbs.	1 pint

### PROPORTIONS FOR MIXING CAMELLIA SPRAYS

Water	White-oil emulsion		
	1-100	1½-100	2-100
1 gal.	3 level tablespoons	4½ level tablespoons	6 level tablespoons
6 gals.	½ pint	¾ pint	1 pint
12 gals.	1 pint	1½ pints	1 quart
50 gals.	½ gal.	¾ quarts	1 gal.
100 gals.	1 gal.	1½ gals.	2 gal.

\*Such as Florida Voick.

To supplement this spray schedule on azaleas, parathion can be very effectively used to clean up an infestation of thrips whenever they appear. Mix 1 lb. of 15% wettable parathion powder with 100 gal. of water. If available, add recommended dosage of spreader sticker to solution.

If infestation of scale appears on camellias in cold or hot weather when oil application is likely to cause damage, an effective cleanup job can be accomplished with parathion. Use 3 lbs. of 15% wettable parathion to 100 gal. of water. Also add recommended dosage of spreader sticker to solution if available.

NOTE — Observe all precautions listed by manufacturer in the use of parathion.







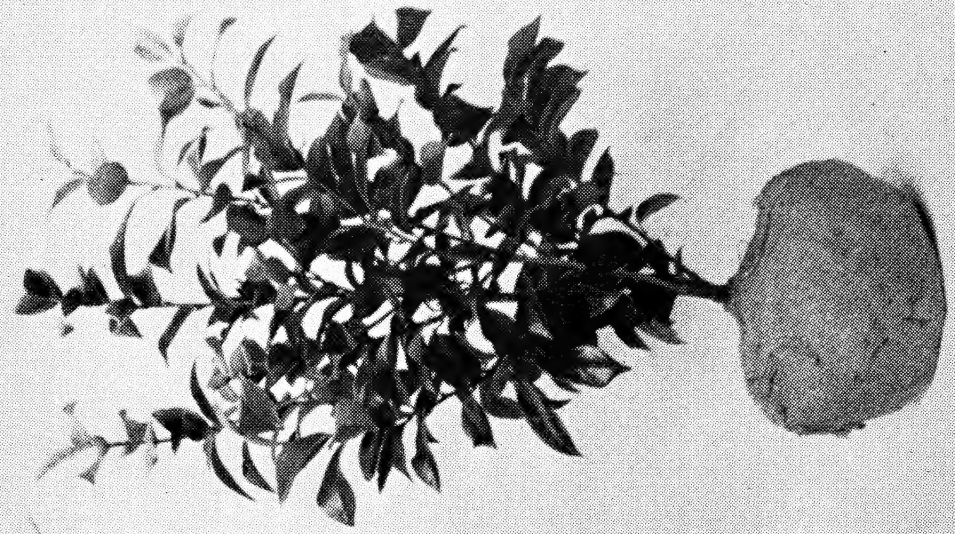
DEBUTANTE



WHITE EMPRESS



PURPLE DAWN



SEPTEMBER MORN



PINK PERFECTION

A random selection of 18-24" two year old Camellias from our fields.

